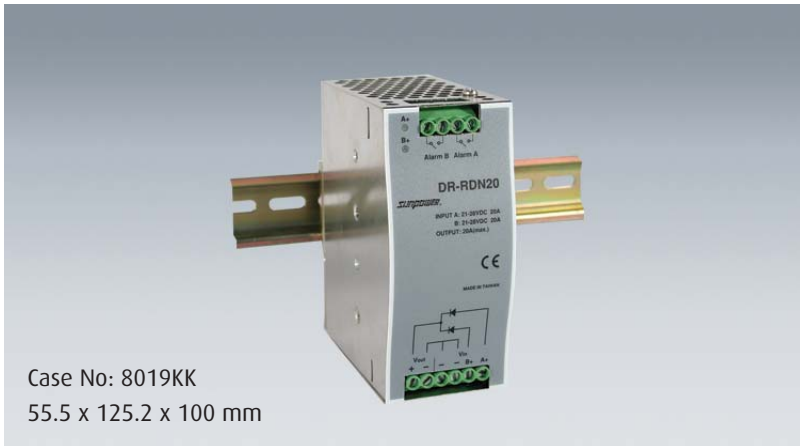


# DR-RDN20 Series

## 20A Power Supply Redundancy Module



Case No: 8019KK  
55.5 x 125.2 x 100 mm

### Features

- Suitable for redundant operation of 24V system
- Installed to Din rail TS35/7.5 or 15
- Relay contact signal output and LED indicator for input failure alarm
- Cooling by free air convection



### Specification

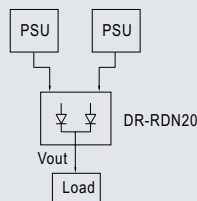
INPUT	<b>Voltage</b>	21~48VAC
	<b>No of Inputs</b>	Two
	<b>Input Current</b>	20A per input
<b>MODEL No.</b>		<b>DR-RDN20</b>
OUTPUT	<b>Voltage</b>	30V
	<b>Output Current</b>	20A
	<b>Voltage Drop</b>	0.5V
	<b>LED Indicators</b>	Two green LEDs indicating each input is "OK or fail"
FUNCTION	<b>Input Voltage Alarm</b>	When input is >20V (±5%) or <30V (±5%) relay contacts
	<b>Relay Contact Rating</b>	30VDC, 1A
ENVIRONMENT	<b>Temperature</b>	Operating: -20 ~ +70°C ; Storage: -40~ +85°C
	<b>Humidity</b>	Operating: 20% ~ 90% RH; Storage: 10% ~ 95% RH (non condensing)
SAFETY	<b>Withstand Voltage</b>	Terminal-Chassis: 0.5KVAC, Relay Contacts-terminal: 0.5K VAC
	<b>Isolation Resistance</b>	Terminal-Chassis: >100M Ohms/500VDC/25°C/70% RH
EMC	<b>EMC Emission</b>	EN55022 (CISPR22) Class B; EN61000-3-2,3
	<b>EMC Immunity</b>	EN61000-4-2,3,4,6,8,11, Heavy industry level, criteria A
OTHERS	<b>Cooling</b>	Natural cooling
	<b>M.T.B.F.</b>	187.9K hrs min. MIL-HDBK-217F (25°C)
	<b>Packing</b>	0.5Kg; 20pcs/11Kg/1.29 CUFT

1 All parameters not specially mentioned are measured at 230VAC input, rated load and 25°C of ambient temperature

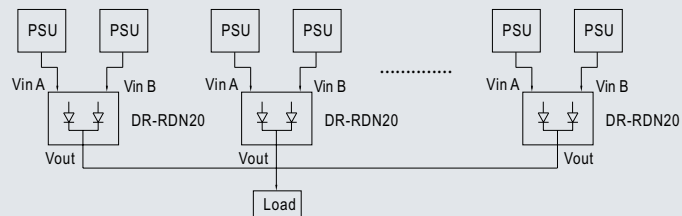
2 The power supply is considered a component which will be installed into a final piece of equipment, which must be re-confirmed that it still meets EMC

### Typical Application Notes

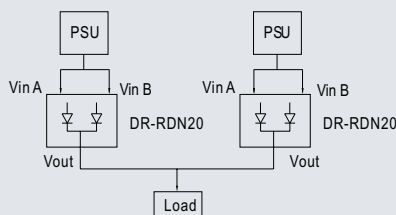
1. 1+1 Redundancy  
Using 1 more PSU as the redundant unit



2. 1+N Redundancy: Using more PSUs as the redundant units to increase the reliability



3. Single use: Connecting only one PSU to one DR-RDN20 to reduce the stress of the diodes and hence increase the reliability

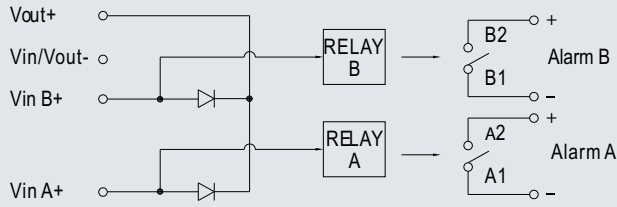


# DR-RDN20 Series

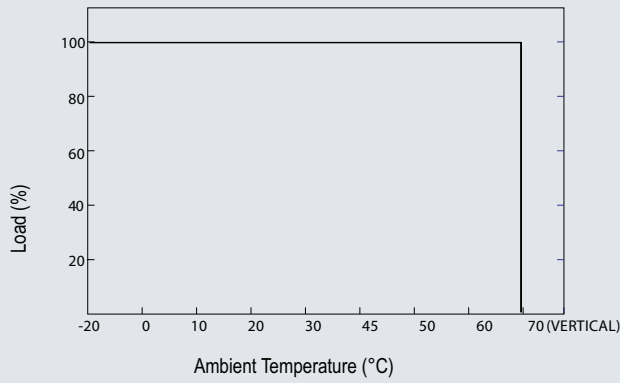
20A Power Supply Redundancy Module



## Block Diagram



## De-Rating Curve



## Dimensions

Terminal Pin. No Assignment:  
(TB1)

Pin No.	Assignment
1	Vout+
2	Vout-
3,4	Vin-
5	Vin B+
6	Vin A+

Terminal Pin. No Assignment:  
(TB2)

Pin No.	Assignment
1	Alarm B1
2	Alarm B2
3	Alarm A1
4	Alarm A2

