



Sunpower  
Orion House  
Calleva Park  
Aldermaston  
Berkshire  
RG7 8SN

Tel: +44 (0)118 981 1001

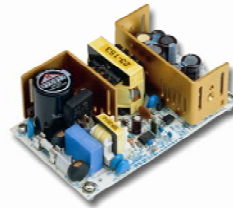
Fax: +44 (0)118 981 2002

E-mail: sales@sunpower-uk.com

# SPP-075-Dx Series

75W, Dual Output

Open Frame Power Supply



127 x76.2 x 41.6 mm

5.0 x 3.0 x 1.64 inch



## Features:

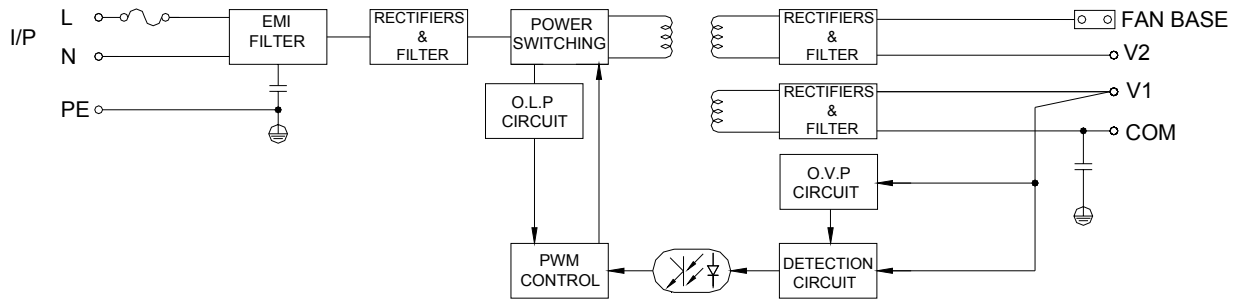
- \* Light weight, compact size
- \* Built-in EMI filter, low ripple noise
- \* Built-in LED indicator base for CN3
- \* Built-in cooling DC fan base CN4 for system, SPP-075-D1 for 12V, SPP-075-D2 for 24V
- \* Over voltage, over load & short circuit protection
- \* 100% full load burn-in test.
- \* UL, cUL, TUV, CB, CE standard

## Specification:

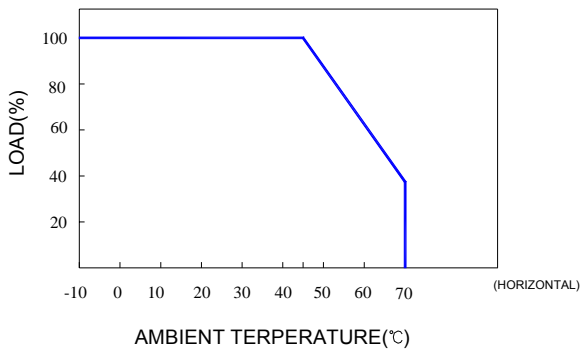
INPUT	Voltage	90V ~ 264VAC universal full range or 127V ~ 375VDC.			
	Frequency	47 ----- 63 Hz			
	Current	<2.0A@100VAC input, full load condition			
	Inrush Current	<30A@115V, <60A@230V AC input, Cold start at 25°C ambient			
	Leakage Current	<1.5mA@264V AC input			
OUTPUT	MODEL No.	SPP-075-D1		SPP-075-D2	
	Voltage	V1	V2	V1	V2
		5V	12V	5V	24V
	Min Load	0.3A	0.2A	0.3A	0.1A
	Max Load	4A	5A	4A	2.5A
	Output Tolerance ②	±3%	±5%	±3%	±5%
	Ripple Noise MAX. ③	70mV	120mV	70mV	200mV
	Efficiency (TYP.)	75%		78%	
PROTECTION	Output MAX.	75W			
	Over Voltage	---	13.8~16.8V	---	27.6~33.6V
	Over Load & Short Circuit	Hiccup and recovers automatically after the fault is removed. When power supply over 105%~ 150% max load or short circuit acted, power supply will go into hiccup mode and recover automatically after the fault is removed.			
ELEC. CHAR.	Rise time	<20mS			
	Hold up time	>50mS@230VAC, at full load 75W			
	Setup time	<800mS@115V, <300mS@230V			
ENVIRONMENT	Temperature ④	Operating: -10 ~ 70°C ; De-rating: 45 ~ 70°C : 2.0%/°C ; Storage: -20 ~ 85°C			
	Humidity	Operating: 20% ~ 90% RH (non condensing); Storage: 10% ~ 95% RH (non condensing)			
SAFETY	Withstand voltage	I/P-O/P:3KVAC, I/P-PE:1.5KVAC, 1minute			
	Isolation resistance	I/P-O/P, I/P-PE, O/P-PE >100MΩ/500VDC at 25°C / 70% RH			
	Safety standard	UL 60950-1 1 <sup>st</sup> , CSA C22.2 No. 60950-1- 03 1 <sup>st</sup> , TUV EN 60950-1:2001+A11, IEC 60950-1, standard			
EMC	EMI	EN 55022 CLASS B · FCC CFR 47 PART 15 CLASS B · CNS 13438 CLASS B. Compliance to EN61000-3-2 CLASS A, EN61000-3-3,			
	EMS	EN 55024 : EN 61000-4-2,3,4,5,6,8,11			
OTHERS	Cooling	Natural cooling			
	M.T.B.F.	210K hours			
	Dimension	127 x76.2 x 41.6 mm (L*W*H)			
	Packing	N.W.: 0.35 Kg / 1pc; 40 pcs / 1.44 CUFT / 1 CTN			
NOTE	① All measurements which not mentioned are based on 230VAC input, <b>output Max</b> at ambient 25°C / 70%RH				
	② Output tolerance included set up voltage, line regulation and load regulation. The regulation is measured between 20%-100% <b>max load</b> of each output, Total output must under <b>output Max</b> .				
	③ Ripple & noise are measured at 100~254VAC input with 0~50°C condition and 20MHz of bandwidth by using a 10" ~15" twisted pair-wire terminated with a 0.1uF & a 47uF parallel capacitor.				
	④ The operating temperature shall follow the de-rating curve in spec The output load may be requested for decreasing as de-rating curve in spec when low input voltage is under 100VAC..				
	⑤ The power supply is considered a component of end-equipment. The end-equipment must be re-confirmed whether comply with EMC directives.				

# SPP-075-Dx Series

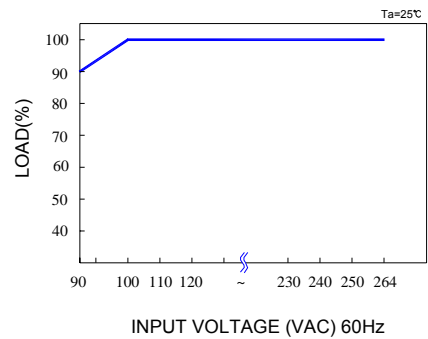
## Block Diagram : UD1-2



## De-rating Curve :

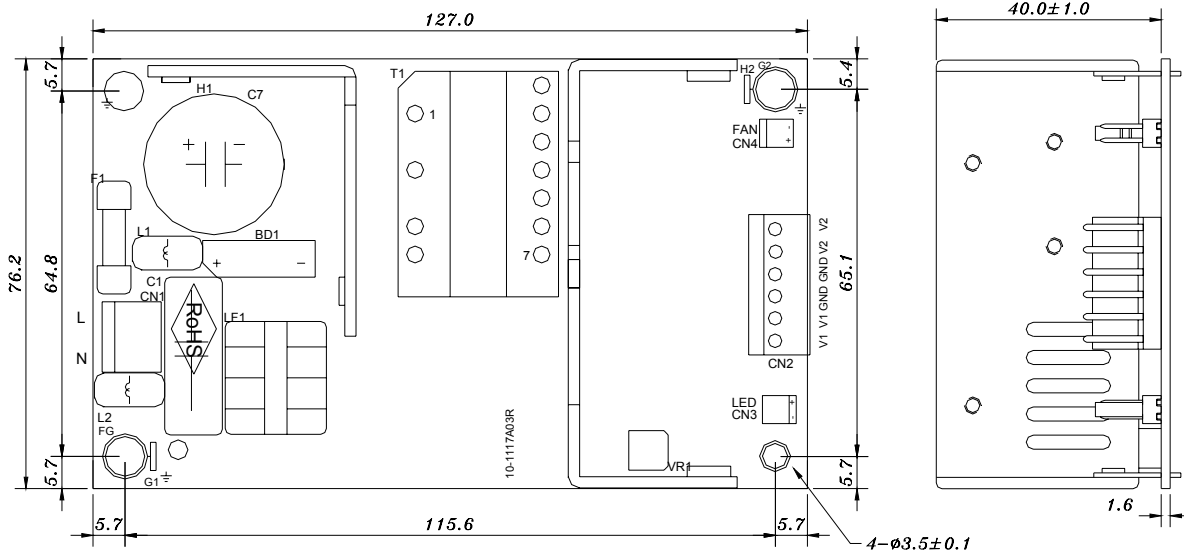


## Output De-rating Vs Input Voltage :



## Dimension:

(Unit: mm)



## NOTES:

I/P: CN1, 3P P:3.96mm( Pin 2 CUT), Molex 5277-03A or compatible.

O/P: CN2, 6P P:3.96mm, Molex 5273-06A or compatible.

LED:CN3, 2P P2.54mm, Molex 5045-2A or compatible.

FAN:CN4, 2P P2.54mm, Molex 5045-2A or compatible.