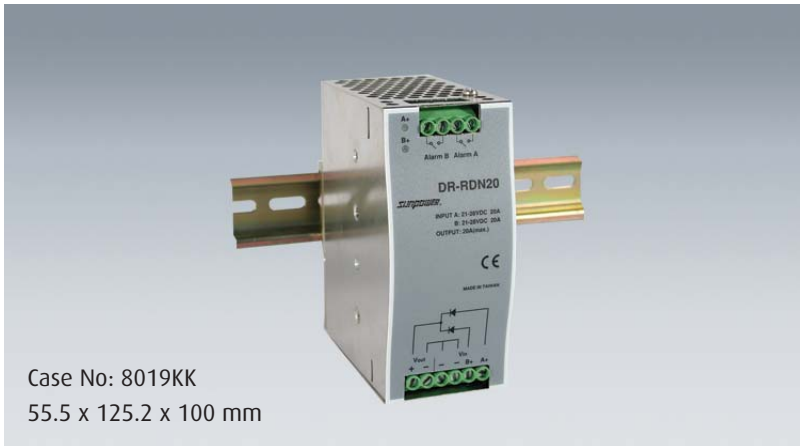


DR-RDN20 Series

20A Power Supply Redundancy Module



Case No: 8019KK
55.5 x 125.2 x 100 mm

Features

- Suitable for redundant operation of 24V system
- Installed to Din rail TS35/7.5 or 15
- Relay contact signal output and LED indicator for input failure alarm
- Cooling by free air convection



Specification

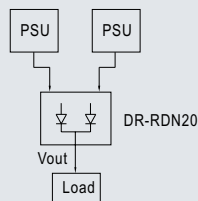
INPUT	Voltage	21~48VAC
	No of Inputs	Two
	Input Current	20A per input
MODEL No.		DR-RDN20
OUTPUT	Voltage	30V
	Output Current	20A
	Voltage Drop	0.5V
	LED Indicators	Two green LEDs indicating each input is "OK or fail"
FUNCTION	Input Voltage Alarm	When input is >20V (±5%) or <30V (±5%) relay contacts
	Relay Contact Rating	30VDC, 1A
ENVIRONMENT	Temperature	Operating: -20 ~ +70°C ; Storage: -40~ +85°C
	Humidity	Operating: 20% ~ 90% RH; Storage: 10% ~ 95% RH (non condensing)
SAFETY	Withstand Voltage	Terminal-Chassis: 0.5KVAC, Relay Contacts-terminal: 0.5K VAC
	Isolation Resistance	Terminal-Chassis: >100M Ohms/500VDC/25°C/70% RH
EMC	EMC Emission	EN55022 (CISPR22) Class B; EN61000-3-2,3
	EMC Immunity	EN61000-4-2,3,4,6,8,11, Heavy industry level, criteria A
OTHERS	Cooling	Natural cooling
	M.T.B.F.	187.9K hrs min. MIL-HDBK-217F (25°C)
	Packing	0.5Kg; 20pcs/11Kg/1.29 CUFT

1 All parameters not specially mentioned are measured at 230VAC input, rated load and 25°C of ambient temperature

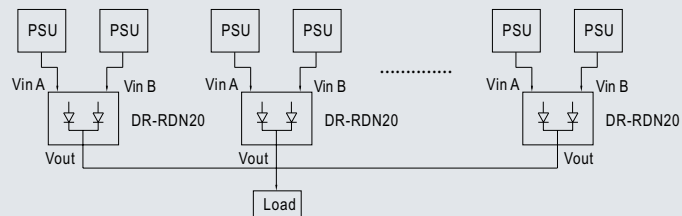
2 The power supply is considered a component which will be installed into a final piece of equipment, which must be re-confirmed that it still meets EMC

Typical Application Notes

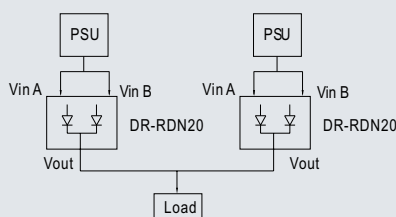
1. 1+1 Redundancy
Using 1 more PSU as the redundant unit



2. 1+N Redundancy: Using more PSUs as the redundant units to increase the reliability



3. Single use: Connecting only one PSU to one DR-RDN20 to reduce the stress of the diodes and hence increase the reliability

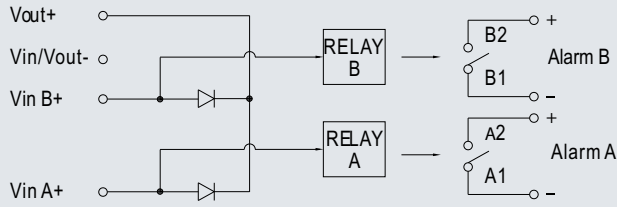


DR-RDN20 Series

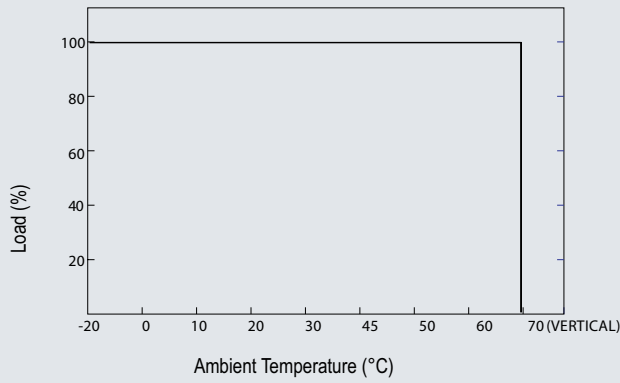
20A Power Supply Redundancy Module



Block Diagram



De-Rating Curve



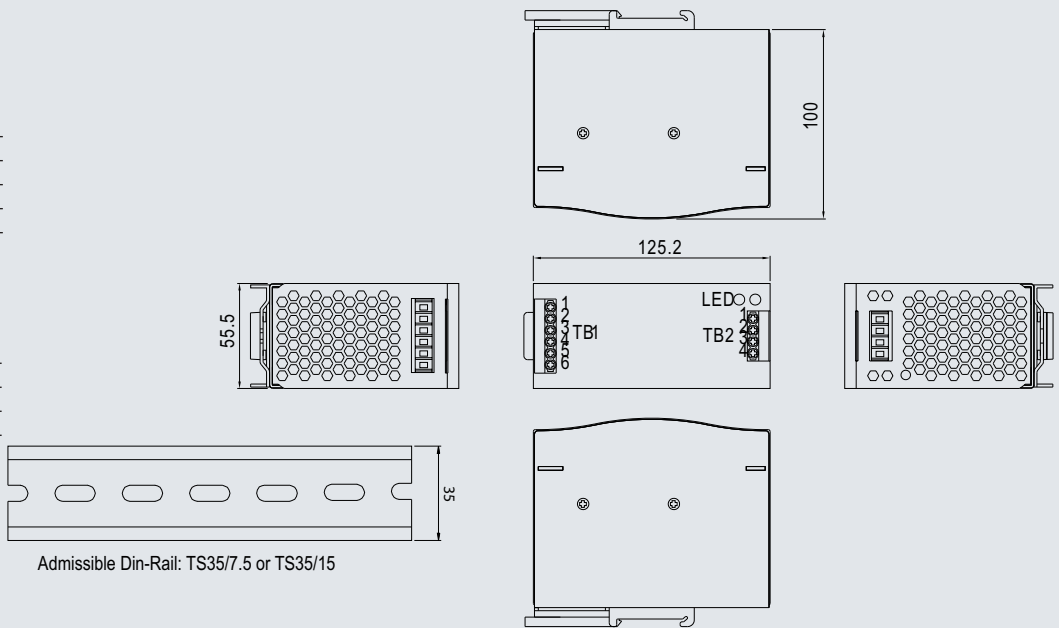
Dimensions

Terminal Pin. No Assignment:
(TB1)

Pin No.	Assignment
1	Vout+
2	Vout-
3,4	Vin-
5	Vin B+
6	Vin A+

Terminal Pin. No Assignment:
(TB2)

Pin No.	Assignment
1	Alarm B1
2	Alarm B2
3	Alarm A1
4	Alarm A2



Admissible Din-Rail: TS35/7.5 or TS35/15